

NOTE: FLOOR JOISTS TO MEET L / 480 DEFLECTION CRITERIA

FLOOR JOISTS ARE DESIGNED USING OPEN JOIST "TRIFORCE" IN ACCORDANCE WITH THE MANUFACTURERS PUBLISHED ENGINEERED SPAN TABLES. ANY SUBSTITUTION IS THE RESPONSIBILITY OF THE FLOOR JOIST SUPPLIER.

IMPORTANT :

PATRIOT HOME DESIGN RECOMMENDS THAT ANY OPENING IN AN EXTERIOR WALL (OR LOAD BRG. WALL) SPANNING MORE THAN 6'-0" HAVE AN ENGINEERED LVL HEADER. IF BUILDER CHOOSES DIMENSIONAL LUMBER (BUILT-UP BEAMS), THEN NBC SPAN TABLES TAKE PRECEDENCE.

HOUSE (CONDITIONED SPACE)

MIN. R-24 INSULATION AND VAPOUR BARRIER INSTALLED AT HEADER

FLOOR SYSTEM (SEE MAIN DETAIL)

- NOT TO SCALE -

GARAGE (UNCONDITIONED SPACE)

1/2" GYPSUM BOARD
HOUSE WRAP
2X6 STUDS @ 16" O.C.
R-24 BATT INSULATION
6 MIL. P.V.B. CMHC APPROVED
1/2" GYPSUM BOARD

HOUSE / GARAGE WALL	EFFECTIVE RSI	EFFECTIVE R-VALUE
2X6 @ 16" O.C. (RSI 1.19 m2K / W)		
AIR FILM (EXTERIOR)	0.03	0.17
1/2" GYPSUM BOARD @ (0.0063 RSI / mm)	0.08	0.45
NOMINAL CAVITY FILL (R-24 BATT)	2.66	15.10
POLYETHYLENE VAPOUR BARRIER	N/A	N/A
1/2" GYPSUM BOARD @ (0.0063 RSI / mm)	0.08	0.45
AIR FILM (INTERIOR)	0.12	0.68
TOTAL:	2.97	16.86
MINIMUM REQ'D:	2.97	16.86

CONTRACTOR TO ENSURE THAT ALL CONCRETE FOOTINGS ARE POURED BELOW THE LOCAL FROST DEPTH AS REQUIRED BY THE LOCAL BUILDING AUTHORITY. DIMENSIONS ON THIS PLAN ARE NOMINAL AND MAY NEED REVISION DEPENDING ON LOCATION.

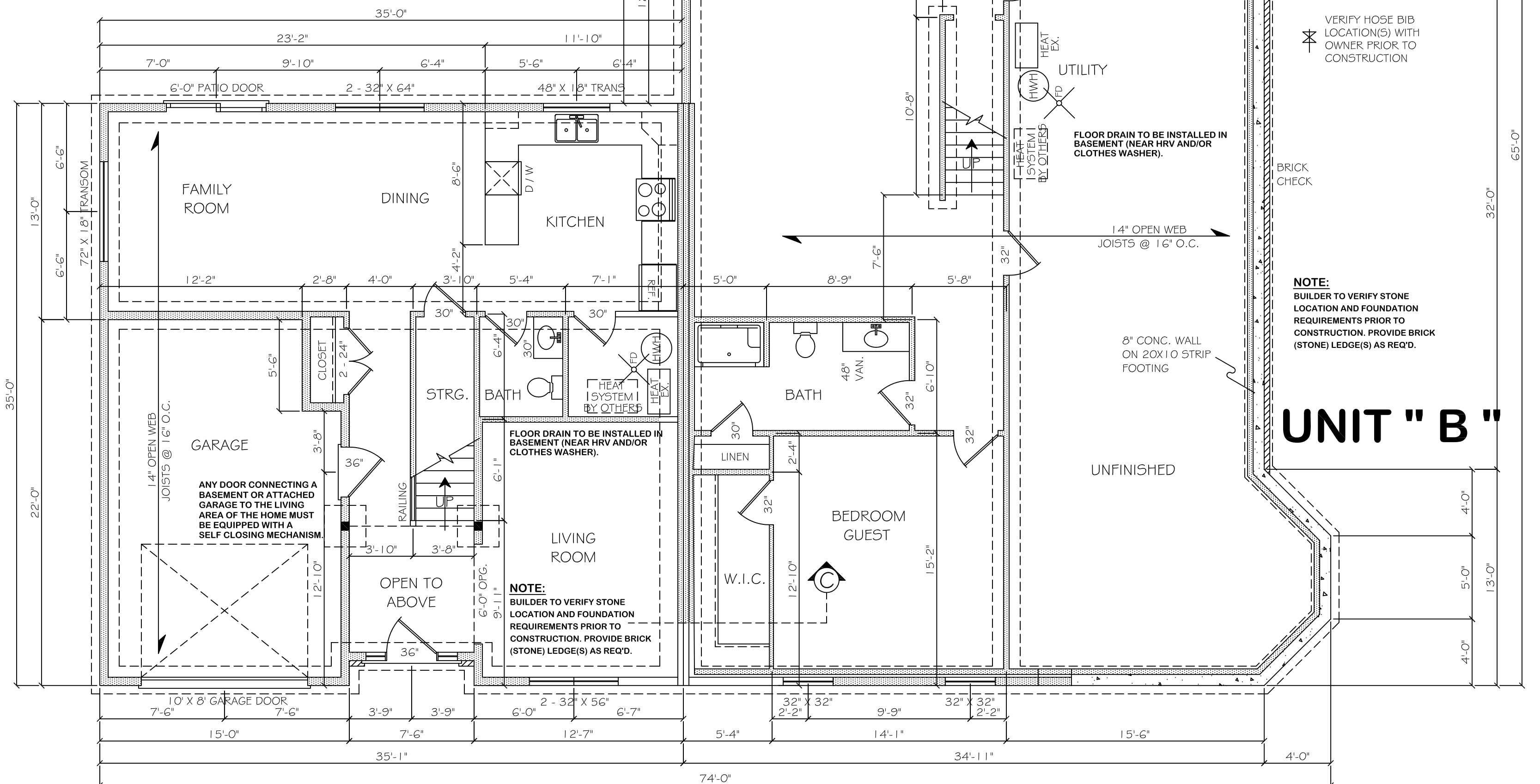
UNIT " A "

STAIR DIMENSIONS ARE NOMINAL AND MAY REQUIRE ADJUSTMENT. BUILDER TO CONFIRM AND REVISE STAIR CONFIGURATION AS NECESSARY, CONFORMING WITH LATEST EDITION OF NBC.

VERTICAL DIMENSION BASEMENT SLAB TO MAIN FLR. SUBFLR.	10'-3 1/4"
No. OF RISERS	16
RISER HEIGHT	7-11/16"

MECHANICAL EFFICIENCY:
HRV - ERV SYSTEMS MUST HAVE A MINIMUM EFFICIENCY OF 60% @ AN OUTSIDE AIR-TEST TEMPERATURE OF 0°C AND 55% @ AN OUTSIDE AIR-TEST TEMPERATURE OF -25°C. REFER TO NBC 9.36.3.9

ALL HVAC EQUIPMENT MUST CONFORM TO PERFORMANCE REQUIREMENTS STATED IN NBC TABLE 9.36.3.10



UNIT " B "



Woodstock, New Brunswick
(506) 325-1068
www.patriothomedesign.com

NOTES / SEALS:

CONCRETE WALLS ARE STUCCOED, INSULATED, WIRED AND GYPROC IS HUNG.

WRITTEN DIMENSIONS HAVE PRECEDENCE OVER THOSE SCALED. DO NOT SCALE DRAWINGS.

ALL BEAM, TRUSS, AND JOIST SIZES AND / OR SPANS, WHETHER INDICATED OR NOT, TO BE VERIFIED BY BUILDER.

IT IS THE RESPONSIBILITY OF THE CONTRACTOR TO VERIFY ALL FRAMING SIZES AND RSO'S OF MANUFACTURED PRODUCTS TO BE INSTALLED.



CONSULTANT:

PROJECT TITLE:

RESIDENTIAL
DUPLEX

DRAWING TITLE:

BASEMENT
PLAN

CLIENT:

STAIRS

ISSUE DATE:

MAY 15, 2016

JOB No:

R-1185

SCALE:

3/16" = 1'-0"

DRAWN BY:

CHRIS CHASE

PAGE No:

R-1185-04